

Telenav Track LITE™ from AT&T

track your employees for only \$19.99 per month

Your Eye In The Sky

Now there's a low-cost, easy way to track your fleet of vehicles or mobile workers when they're in the field.

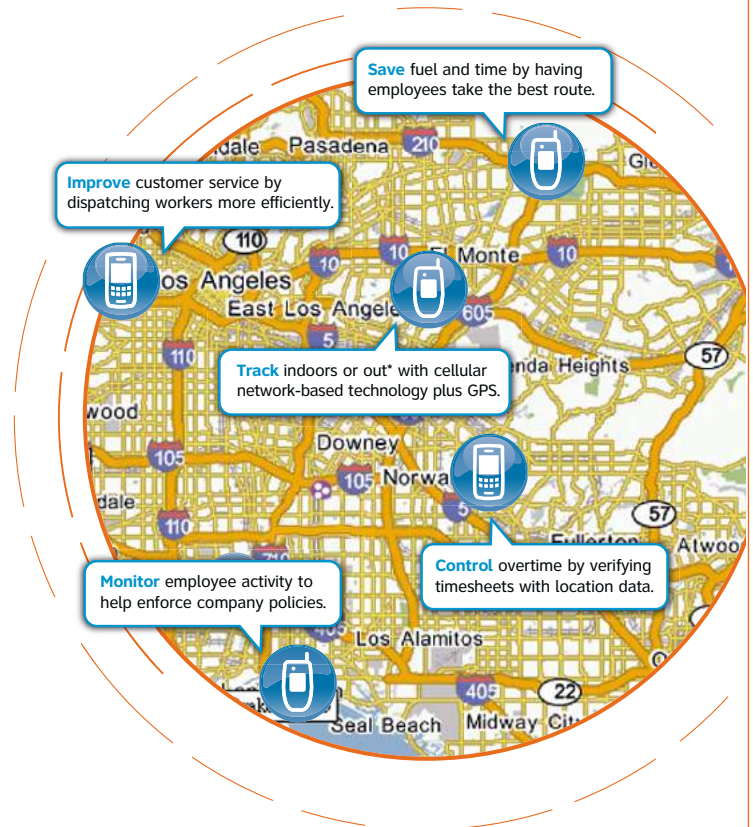
With Telenav Track LITE™ on virtually any AT&T mobile phone or laptop card, you can dispatch workers more efficiently, reduce delays, improve customer service and much more. For only \$19.99 a month per device – with no associated hardware or software to buy or install – you can see where your employees are, what route they took and how long they stayed – all just by using a PC and the Internet.

	Telenav Track LITE™
Monthly Service Charge (per device)	\$19.99
Set Up Fee (per device)	\$19.99

Important Information

Coverage: Most Telenav location features require GPS reception and a wireless data network connection. Telenav's location services are operative in the United States, Alaska, and Canada; however, environmental or other factors may also limit GPS location information. Wireless coverage not available in all areas. Availability, security, speed, timeliness and uninterrupted use of service are not guaranteed. Not all features available on all devices. Compatible device required for GPS- or aGPS-derived location information. Activating data blocking features will result in Cell ID or Enhanced Cell ID location information only. Location accuracy may be impaired when tracking indoors. A one-time set up fee of \$19.99 per device may apply. You may cancel Telenav Track LITE at any time. You will be billed for all data usage up to cancellation. Usage/Billing: Solution includes wireless service from AT&T and Telenav Track LITE location services provided by Telenav, Inc. ("Telenav"). Monthly service charge includes sufficient data to execute location requests every ten minutes for each forty hour work week in the billing cycle ("Included Data"). Additional location requests or data usage beyond the Included Data may result in additional charges at your applicable data rates.

Telenav Track LITE from AT&T is subject to Telenav's additional terms and conditions, including without limitation its software license. In order to use Telenav Track LITE, you



must agree to be bound by those terms and conditions. Those terms and conditions are available at <http://www.Telenav.com/legal/terms-of-use.html#Telenav-track-terms-of-use>.

Additional hardware, software, services, internet access and/or special network connection may be required. Additional charges, terms, conditions and restrictions will apply. For complete solution details, see applicable service agreement, rate plan brochure(s), coverage maps and applicable third-party terms and conditions. AT&T's privacy policy may be viewed at www.att.com/privacy.

For more information please contact your AT&T Solution Provider.

